



## Dual Enrollment Academic Advising Associate in Arts Degree (Spring 2023 and later)

Name: \_\_\_\_\_ EMPL ID: \_\_\_\_\_ High School: \_\_\_\_\_  
High School Graduation Date: \_\_\_\_\_ High School GPA: \_\_\_\_\_ College GPA: \_\_\_\_\_  
Credits: \_\_\_\_\_ as of \_\_\_\_\_ World Language Requirement met: Y N In Progress FCLE Score: \_\_\_\_\_  
Anticipated Major: \_\_\_\_\_  
Potential Transfer Colleges/Universities: \_\_\_\_\_

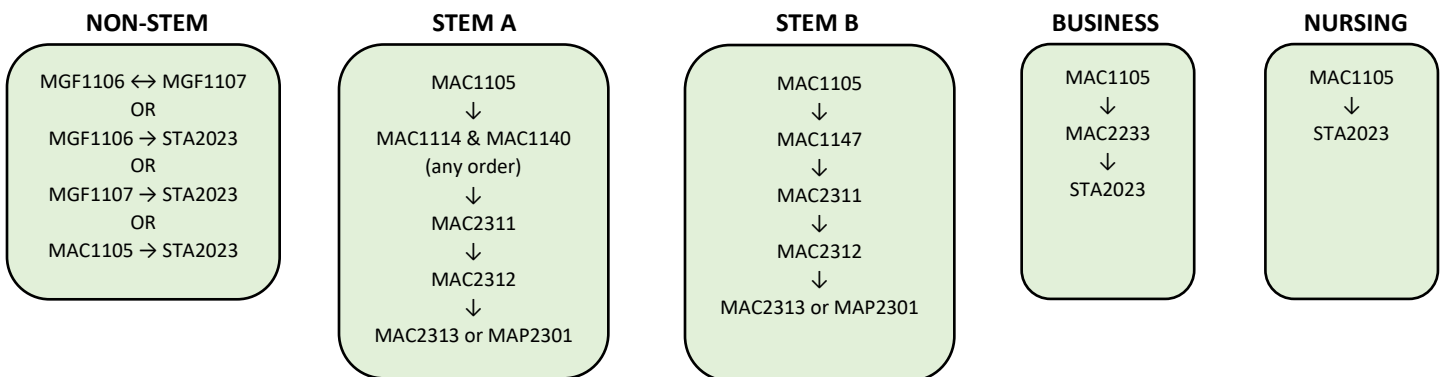
- Note:
1. Students must earn qualifying scores in Reading and Writing and have a Math attempt on a College Readiness Assessment to participate in the DE program. Students must earn qualifying scores in Math on a College Readiness Assessment to take Math courses and to continue beyond 12 credit hours in the DE program.
  2. Students in an AA program must complete the General Education requirements and any recommended prerequisite course(s) needed to transfer into their intended bachelor's degree program before taking elective courses.
  3. A student must complete 15 credit hours of **State Core (bold type and denoted with \*)** General Education courses prior to earning 24 total hours of college credit. The State Core General Education course must come from each of the five discipline areas.
  4. A grade of C or better is required in all General Education courses. Courses where a C or better has been earned, **may not** be retaken. Students who earn a D, F, W, or NA in a course in a single semester, but still meet the GPA requirement for both high school and college, may apply for probation to continue in the program. Students who earn more than one D, F, W, or NA in a course in a single semester or a combination of semesters, are ineligible to continue in the DE program.
  5. AA degree-seeking students must demonstrate competency in a foreign language. Competency is demonstrated by the completion of a minimum of eight semester hours at the college level **OR** by the completion of two high school credits in the same foreign language.
  6. Students are required to demonstrate competency in civic literacy by completing AMH 2020 **OR** POS 2041 **AND** by the achievement of the standard score on a state-approved assessment.
  7. Students must take **SLS1103** in the first semester of their DE program.
  8. Students must complete 60 credits (36 General Education + 24 Elective) to earn an AA Degree.
  9. Students may **not** register themselves or make any changes to their schedules. All scheduling actions must go through the student's Dual Enrollment Coordinator.
  10. Students must adhere to all deadlines, rules, and policies of FSCJ as well as those outlined in the articulation agreement with the student's school.

Term	Year	Grade	I. COMMUNICATIONS (9 credit hours - 3 credit hours from each category)		Credits	Prerequisites
<b>Category A</b>						
			<b>*ENC 1101</b>	<b>English Composition I</b>	3	
			<b>*ENC 1101C**</b>	<b>English Composition I Enhanced</b>	4	D or F in ENC1101
<b>Category B</b>						
			ENC 1102	Writing About Texts	3	ENC 1101
<b>Category C</b>						
			SPC 2017	Introduction to Speech Communications	3	ENC 1101
			SPC 2065	Speech Communication for Business	3	ENC 1101
			SPC 2608	Fundamentals of Public Speaking	3	ENC 1101
**This course includes one credit hour of supplemental lab instruction that will count toward the 24 hours of AA electives.						

Term	Year	Grade	II. HUMANITIES (6 credit hours – 3 credit hours from Category A AND 3 credit hours from Category A OR B) At least one course <u>must</u> have an HUM prefix		Credits	Prerequisites
<b>Category A</b>						
			<b>*HUM 2020</b>	<b>Topics in the Humanities</b>	3	
			<b>*ARH 2000</b>	<b>Arts in the Humanities</b>	3	
			<b>*PHI 2010</b>	<b>Philosophy in the Humanities</b>	3	
			<b>*MUL 2010</b>	<b>Music in the Humanities</b>	3	
			<b>*LIT 2000</b>	<b>Literature in the Humanities</b>	3	ENC 1101
			<b>*THE 2000</b>	<b>Theatre in the Humanities</b>	3	
<b>Category B</b>						
			HUM 2210	Humanities: Prehistory to the 15th Century	3	
			HUM 2230	Humanities: Mainstream of Cultures, 15th to 20th Century	3	
			HUM 2250	Humanities: 20th and 21st Century Cultural Perspectives	3	
			HUM 2410	Humanities of Asia	3	
			HUM 2450	Humanities in the Americas	3	
			DAN 2100	Dance in the Humanities	3	
			AML 2010	American Literature: Colonial Times to 1900	3	ENC 1101
			AML 2020	American Literature: 1865 to Present	3	ENC 1101
			ARH 2050	Art History from Prehistory to 15th Century	3	
			ARH 2051	Art History from 15th to 21st Century	3	
			ENG 2100	Film Studies	3	
			ENL 2012	English Literature to 1750	3	ENC 1101
			ENL 2022	English Literature since 1750	3	ENC 1101
			LIT 2100	Great Ideas in World Literature	3	
			PHI 2603	Introduction to Applied Ethics	3	
			PHI 2600	Moral and Political Philosophy	3	
			REL 2000	Religion in the Humanities	3	
			REL 2300	World Religions	3	

Term	Year	Grade	III. MATHEMATICS (6 credit hours - choose any two from the following courses) (see Math Pathways for guidance)		Credits	Prerequisites
			*MAC 1105	College Algebra	3	MAT 1033 or Eligible Scores
			*MAC 1105C	College Algebra Enhanced	5	D in MAT 1033 or D or F in MAC 1105
			MAC 1114	College Trigonometry	3	MAC 1105
			MAC 1140	Precalculus Algebra	4	MAC 1105
			MAC 1147	Precalculus Algebra and Trigonometry	5	B in MAC 1105
			MAC 2233	Calculus for Business and Social Studies	3	MAC 1105
			*MAC 2311	Calculus with Analytic Geometry I	4	MAC 1114 & MAC 1140 or MAC 1147
			MAC 2312	Calculus with Analytic Geometry II	4	MAC 2311
			MAC 2313	Calculus with Analytic Geometry III	4	MAC 2312
			MAP 2302	Differential Equations	3	MAC 2312
			*MGF 1106	Topics in College Mathematics	3	Eligible Scores
			*MGF 1107	Explorations in Mathematics	3	Eligible Scores
			*STA 2023	Elementary Statistics	3	MAC 1105 or MAC 1105C or MGF 1106 or MGF 1107

### MATH PATHWAYS



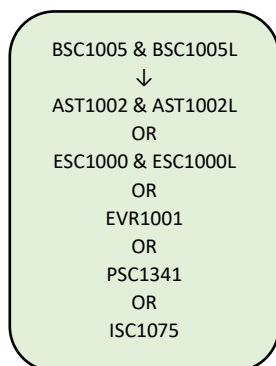
Term	Year	Grade	IV. NATURAL SCIENCES (6 - 8 credit hours - choose one course from Category A <b>AND</b> one course from Category B <b>OR</b> one pair of courses from Category C) Students must take at least 1 lab course (designated with a C or L) (see Science Pathways for guidance)		Credits	Prerequisites
<b>Category A (Biological Sciences)</b>						
			BOT 1010C	Botany	4	
			*BSC 1005	Life in its Biological Environment	3	
			BSC 1005L	Biology Laboratory	1	
			*BSC 2010C	Principles of Biology I	4	
			BSC 2011C	Principles of Biology II	4	BSC 2010C
			BSC 2020C	Human Biology	4	
			BSC 2050	Biology of Environmental Systems	3	
			*BSC 2085C	Human Anatomy and Physiology I	4	
			BSC 2086C	Human Anatomy and Physiology II	4	BSC 2085C
			**ISC 1075	Principles of Science and Investigation	3	
			MCB 2010C	Microbiology	4	CHM 1020 or CHM 1025C or CHM 1032 or CHM 2045C
			OCB 2000C	Fundamentals of Marine Biology	4	
			ZOO 1010C	General Zoology	4	

Category B (Physical Sciences)					
		<b>*AST 1002</b>	<b>Introduction to Astronomy</b>	3	
		AST 1002L	Astronomy Laboratory	1	
		<b>*CHM 1020</b>	<b>Chemistry for Liberal Arts</b>	3	
		CHM 1025C	Introduction to General Chemistry	4	CO: MAC 1105 or MAP 2302
		CHM 1032C	Principles of General Chemistry	4	CO: MAT 1033 or higher
		<b>*CHM 2045C</b>	<b>General Chemistry and Qualitative Analysis I</b>	4	MAC 1105 and CHM 1025C
		CHM 2046C	General Chemistry and Qualitative Analysis II	4	CHM 2045C
		<b>*ESC 1000</b>	<b>Earth and Space Science</b>	3	
		ESC 1000L	Earth and Space Science Laboratory	1	
		<b>*EVR 1001</b>	<b>Introduction to Environmental Science</b>	3	
		GLY 1010C	Physical Geology and Laboratory	4	
		<b>**ISC 1075</b>	<b>Principles of Science and Investigation</b>	3	
		OCE 2001	Survey of Oceanography	3	
		OCE 2001L	Oceanography Laboratory	1	
		<b>*PHY 1020C</b>	<b>Physics for Liberal Arts with Laboratory</b>	3	PRE or CO: MAT 1033
		<b>*PHY 2048C</b>	<b>Physics I with Calculus</b>	4	MAC 2311 CO: MAC 2312
		PHY 2049C	Physics II with Calculus	4	PHY 2048C CO: MAC 2313
		<b>*PHY 2053C</b>	<b>General Physics I</b>	4	MAC 1140 and MAC 1114 or MAC 1147 or MAC 2311
		PHY 2054C	General Physics II	4	PHY 2053C
		PSC 1341	Physical Science	3	
Category C (Biological Sciences and Physical Sciences PAIRS)					
		<b>*BSC 2085C</b>	<b>Human Anatomy and Physiology I</b>	4	
		BSC 2086C	Human Anatomy and Physiology II	4	BSC 2085C
		<b>*BSC 2010C</b>	<b>Principles of Biology I</b>	4	
		BSC 2011C	Principles of Biology II	4	BSC 2010C
		<b>*BSC 2010C</b>	<b>Principles of Biology I</b>	4	
		BSC 2020C	Human Biology	4	
		<b>*CHM 2045C</b>	<b>General Chemistry and Qualitative Analysis I</b>	4	MAC 1105 and CHM 1025C
		CHM 2046C	General Chemistry and Qualitative Analysis II	4	CHM 2045C
		<b>*PHY 2048C</b>	<b>Physics I with Calculus</b>	4	MAC 2311 CO: MAC 2312
		PHY 2049C	Physics II with Calculus	4	PHY 2048C CO: MAC 2313
		<b>*PHY 2053C</b>	<b>General Physics I</b>	4	MAC 1140 and MAC 1114 or MAC 1147 or MAC 2311
		PHY 2054C	General Physics II	4	PHY 2053C

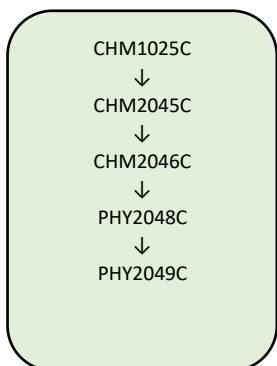
\*\*This course may fulfill the requirement for Biological Sciences OR Physical Sciences, but not both.

### SCIENCE PATHWAYS

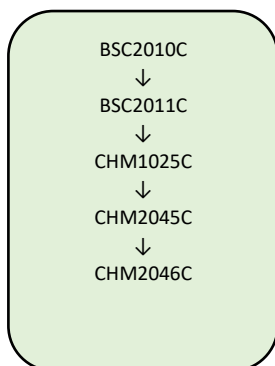
#### NON-STEM



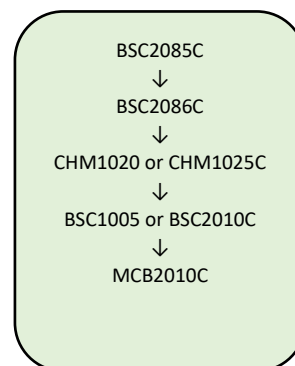
#### STEM – ENGINEERING



#### STEM – BIOLOGY



#### NURSING



Term	Year	Grade	<b>V. SOCIAL AND BEHAVIORAL SCIENCES</b> (9 credit hours - complete 3 credit hours from Category A <b>AND</b> 6 credit hours from the other categories: see course notes) Students must take either AMH 2020 <u>or</u> POS 2041 <u>and</u> earn the standard score on the FCLE to demonstrate competency in civic literacy.		Credits	Notes/Prerequisites
<b>Category A</b>						
			<b>*AMH 2020</b>	<b>US History from 1877 to the Present</b>	3	
				Students who choose this course must take a course from Category C and Category D		
			<b>*ANT 2000</b>	<b>General Anthropology</b>	3	
				Students who choose this course must take a course from Category B and Category D		
			<b>*ECO 2013</b>	<b>Principles of Economics I</b>	3	
				Students who choose this course must take a course from Category B and Category D		
			<b>*POS2041</b>	<b>American Federal Government</b>	3	
				Students who choose this course must take a course from Category C and Category D		
			<b>*PSY 1012</b>	<b>General Psychology</b>	3	
				Students who choose this course must take a course from Category B and Category C		
			<b>*SYG 2000</b>	<b>Introductory Sociology</b>	3	
				Students who choose this course must take a course from Category B and Category C		
<b>Category B</b>						
			AMH 2010	US History to 1877	3	
			<b>*AMH 2020</b>	<b>US History from 1877 to the Present</b>	3	
			<b>*POS 2041</b>	<b>American Federal Government</b>	3	
			WHO 1012	World History to 1500	3	
			WHO 1022	World History since 1500	3	
<b>Category C</b>						
			AMH 2070	History of Florida	3	
			AMH 2092	African American History and Culture to 1877	3	
			AMH 2093	African American History and Culture from 1877	3	
			<b>*ANT 2000</b>	<b>General Anthropology</b>	3	
			ANT 2410	Cultural Anthropology	3	
			ANT 2511	Physical Anthropology	3	
			<b>*ECO 2013</b>	<b>Principles of Economics I</b>	3	
			INR 2002	International Relations	3	
			LAH 2000	History of Latin America	3	
			POS 2112	State and Local Government	3	
			WST 2010	Introduction to Women's Studies	3	ENC 1101
<b>Category D</b>						
			DEP 2004	Human Growth and Development	3	
			INP 1390	Human Relations in Business and Industry	3	
			<b>*PSY 1012</b>	<b>General Psychology</b>	3	
			<b>*SYG 2000</b>	<b>Introductory Sociology</b>	3	
			SYG 2010	Social Problems	3	
			SYG 2430	Marriage and Family	3	

Term	Year	Grade	Electives 24 credit hours		Credits	Notes
			SLS 1103	Strategies for Learning Success	3	

Advising Notes: